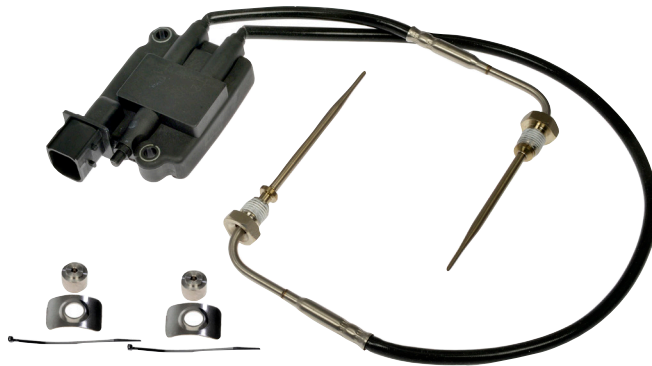


SEPTEMBER 2023

NEW HEAVY DUTY SOLUTIONS

EXHAUST GAS TEMPERATURE SENSOR

INNOVATIVE AND COST-EFFECTIVE | **REPLACE JUST THE BUNG, SAVE THE EXHAUST PIPE**



904-7343

2013-2018 Cummins ISL & ISX Engines
OE Numbers: 4307100, 4384811

- EGT sensors frequently seize in the exhaust bung, making replacement difficult and damaging the bung
- This unique repair solution directly replaces the sensor and comes with a bung repair kit just in case. Includes sensor, new bungs, weld-on plates, and zip ties

CHASSIS FAIRING HANDLE EXTENSIONS FOR VOLVO VNL TRUCKS

COST-EFFECTIVE RELIABLE REPLACEMENTS | **MANUFACTURED TO STRICT SPECIFICATIONS**



760-5122

Volvo VNL 2022-07 (Front Left)
OE Number: 20727160



760-5123

Volvo VNL 2022-07 (Front Right)
OE Number: 20727161



760-5499

Volvo VNL 2018-10 (Front Right)
OE Number: 85125440

- These chassis fairing handle extensions are designed to match the fit and function of the original equipment handle extensions on specified Volvo trucks
- Engineered to provide a secure connection between the fairing handle and the chassis fairing when the original equipment extensions are missing, stripped, or damaged by collision

WINDOW CRANK HANDLES

RELIABLE REPLACEMENTS WITH VERSATILE APPLICATIONS | **RESTORES SMOOTH OPERATING FUNCTION**



760-5120

Peterbilt 362 2010-08, Peterbilt 362 2006-05,
Peterbilt 378 2003-90, Peterbilt 379 2003-90 (Chrome)
OE Numbers: 2015373, 2015374



760-5498

Isuzu NPR 2018-07, Isuzu NQR 2011-08,
Isuzu NRR 2010-08 (Black)
OE Number: 8974053133

- Designed to match the fit of the original equipment handles on specified trucks
- Engineered to fully restore the functionality and appearance of a handle that is missing or damaged

Dayton
Parts®
DRIVEN BY DORMAN™

Get vehicle applications and technical details at daytonparts.com

Dayton Parts is a company of Dorman Products, Inc. | Corporate Office and Customer Service: 1-800-523-2492 | Tech Line: 1-866-933-2911
©2023 No reproduction in whole or in part without prior written approval.

HD-NPA-SEP-2023



SEPTEMBER 2023

NEW HEAVY DUTY SOLUTIONS

INTERIOR & EXTERIOR DOOR HANDLE REPAIR SOLUTIONS

RESTORES FUNCTION & APPEARANCE | **ENGINEERED FOR DURABILITY & SEAMLESS INSTALLATION**

EXTERIOR DOOR HANDLE TRIM, CHROME



760-5534

International 2022-01 (Left, Right, Chrome)
OE Number: 3613326C2

INTERIOR DOOR HANDLE BASE



760-5118

Volvo VHD 2022-06, Volvo VNL 2022-06,
Volvo VNR 2022-18 (Left, Internal)
OE Numbers: 1063327, 20570721

- Designed to match the fit and appearance of the original door handle and trim components on specified trucks
- Engineered to fully restore appearance and functionality after the original door components are missing, failed from wear, or damaged from collision

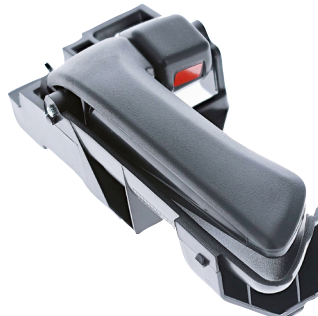
INTERIOR DOOR HANDLE



760-5121

Volvo VHD 2013-04, Volvo VNL 2013-04,
Volvo VNM 2013-04 (Left, Right, External Handle)
OE Number: 20379593

INTERIOR DOOR HANDLE



760-5124

Isuzu FTR 2022-18, Isuzu NPR 2018-07,
Isuzu NQR 2022-08, Isuzu NRR 2022-08 (Left, Handle Only)
OE Number: 8974053101

INTERIOR DOOR HANDLE



760-5125

Isuzu FTR 2022-18, Isuzu NPR 2018-07,
Isuzu NQR 2022-08, Isuzu NRR 2022-08 (Right, Handle Only)
OE Number: 8974053091

INTERIOR DOOR HANDLE BEZEL



760-5126

Isuzu FTR 2022-18, Isuzu NPR 2018-07,
Isuzu NQR 2022-08, Isuzu NRR 2022-08 (Front Left)
OE Number: 8974053120

INTERIOR DOOR HANDLE



760-5127

Isuzu FTR 2022-18, Isuzu NPR 2018-07,
Isuzu NQR 2022-08, Isuzu NRR 2022-08 (Front Right)
OE Number: 8974053110

Dayton
Parts®
DRIVEN BY DORMAN™

Get vehicle applications and technical details at daytonparts.com

Dayton Parts is a company of Dorman Products, Inc. | Corporate Office and Customer Service: 1-800-523-2492 | Tech Line: 1-866-933-2911
©2023 No reproduction in whole or in part without prior written approval.

HD-NPA-SEP-2023



HD POWER STEERING PUMPS

THE MOST RELIABLE QUALITY FROM THE MOST TRUSTWORTHY BRAND

The power steering pump on a Class 7 or Class 8 heavy-duty truck is the most critical component of the power steering system. So when you need to make the best replacement choice, choose Dayton.

Dayton HD power steering pumps are all-new construction, with design upgrades engineered to help eliminate the most common failure points of lesser aftermarket replacement pumps. To protect against metal shavings that contaminate the steering fluid and cause the pump to seize, our pumps feature wearresistant premium bearings and seals. And every single pump is tested for quality and performance and assigned a serial number before it leaves our global manufacturing facilities.

Don't settle for a remanufactured power steering pump or one from a no-name brand with questionable after-sales support. Count on Dayton to deliver OEM-benchmarked performance and hassle-free, direct-replacement units at prices that fit fleet and owner-operator budgets.



- **Comprehensive coverage** – coverage for many of the most popular Class 7 and Class 8 trucks on the road
- **Rigorously tested** – every power steering pump is quality tested and serialized
- **All-new construction, not remanufactured** – eliminate the hassles of core charges and the inconsistent quality of lesser brands
- **Improved designs** – Dayton HD power steering pumps feature upgraded bearings and seals designed to eliminate common pump failure points that can cause pumps to fail

PART #	APPLICATIONS	INDUSTRY PART NUMBERS
350-1001	International 1997-91	542027310
350-1002	Chevrolet 2002-98, GMC 2002-98	542012310
350-1003	-	542017610
350-1004	IC Corporation 2016-08, International 2017-06, 2000	542032010
350-1005	International 2003-91	542013010
350-1006	International 2002-94	2107922
350-1008	-	7674955344
350-1010	-	7841933
350-1011	-	PEV251615L101
350-1012	-	PEV251615R101
350-1013	Freightliner Cascadia 2014-09	PEV251618L101
350-1014	-	PEV251618R101
350-1015	-	PEV282415R101
350-1016	Freightliner 2001-97	PS251615L102
350-1017	-	PS251615L103
350-1018	Kenworth 2003-02, 2000	PS251615R102
350-1019	-	PS282815L103
350-1020	-	PS282815R114
350-1021	Peterbilt 357 2003-99	PS362815L102
350-1022	-	PS362815L105
350-1023	Peterbilt 357 2004-97	PS362815R102
350-1024	-	K188146
350-1025	-	V20F1P9P38C6G20
350-1026	International 1999-95	2106544
350-1027	-	542019510
350-1028	Volvo VHD 2003-01, VN 1999-98, VNL 2003-00, VNM 2003-98	2108320
350-1029	International 2003-92	542017210
350-1030	-	542003210

PART #	APPLICATIONS	INDUSTRY PART NUMBERS
350-1032	-	7673-955-908
350-1033	Ford F800 1999-92	7674-955-343
350-1035	-	7677-955-180
350-1036	-	7684-955-955
350-1038	-	PEV221614L304
350-1040	-	PS251615L105
350-1041	-	PS251615L116
350-1042	-	PS251615R114
350-1043	Peterbilt 320 2005-00, 330 2005-00	PS362815L113
350-1044	-	PS362815R105
350-1045	Volvo VNL 2005-00	2108216
350-1048	Volvo VNL 2017-06	8693-974-672
350-1049	-	PEV222418L101
350-1051	Peterbilt 379 2002-01, 387 2002-01	PS251615R103
350-1052	-	PS282015R102
350-1053	-	PS282815L116
350-1054	Peterbilt 357 2004-03	PS362815R103
350-1055	-	38QC375
350-1058	-	443101880
350-1059	-	PS362815L103
350-1060	-	2108830
350-1063	-	2114266
350-1065	-	443501570
350-1066	Volvo WAH 1999-96, WC 1998-96, WG 1999-96, WI 1998-96	542016910
350-1068	-	PS221616R326
350-1069	Peterbilt 2023-98	PS252015R114
350-1070	-	PS282015L111
350-1071	-	PS282015L116
350-1072	Peterbilt 357 2002-99	PS282815R102

